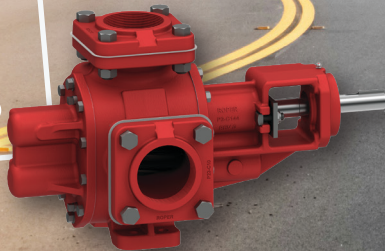


ASPHALT MAINTENANCE SOLUTIONS

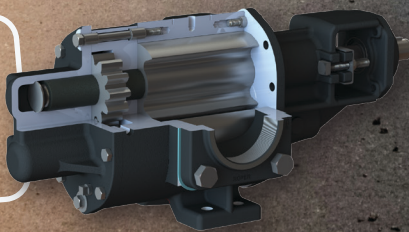
APPLICATIONS

- Crack & Joint Sealing
- Tack Emulsion
- Asphalt Emulsion & Seal Coat
- Heat Transfer Oil
- Mastic

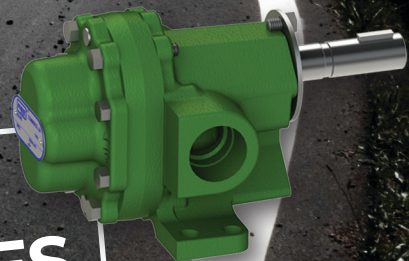
**3600
SERIES**



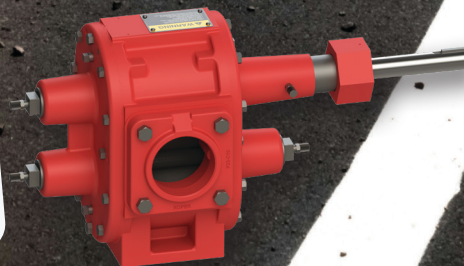
**ROCK
WORX™**



**A
SERIES**



**5600
SERIES**





THE LEADING FORCE behind liquids™ since 1857

CRACK SEALING & JOINT SEALING

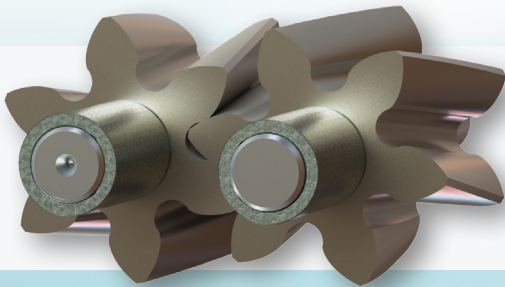
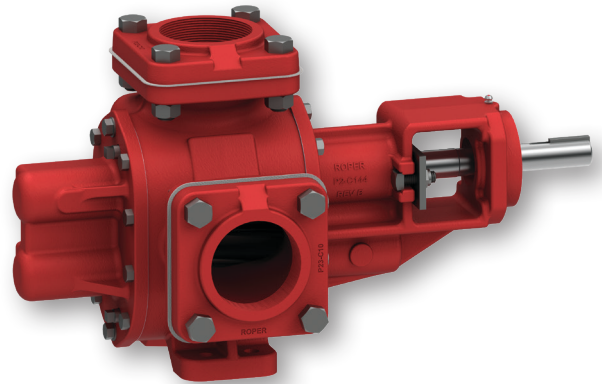
3600 Series

450°F
(UP TO)

125 PSI
(UP TO)

9
SIZES AVAILABLE

- Efficiently pump a wide range of viscosities.
- Options for oil / steam jacketing
- Extremely easy to service and maintain.

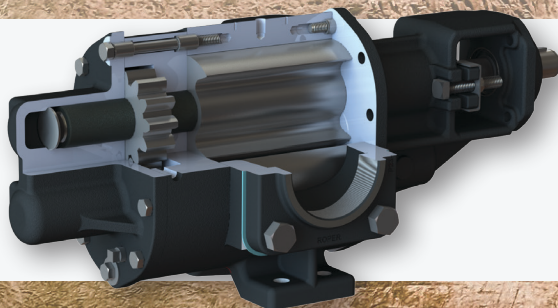
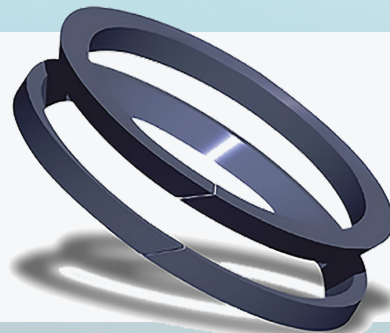


eX Internals

Hardened bearings and shafts stand up to abrasive fillers and sand present in the product.

Wedgee™ Seal

Provides close clearance flow restriction at the bottom of the stuffing box, filtering out abrasive solids that otherwise would damage the shaft and/or packing.



Added capability to handle solids up to 3/8" and high sand contents, preventing lock-ups due to occasional solids.

TACK EMULSION

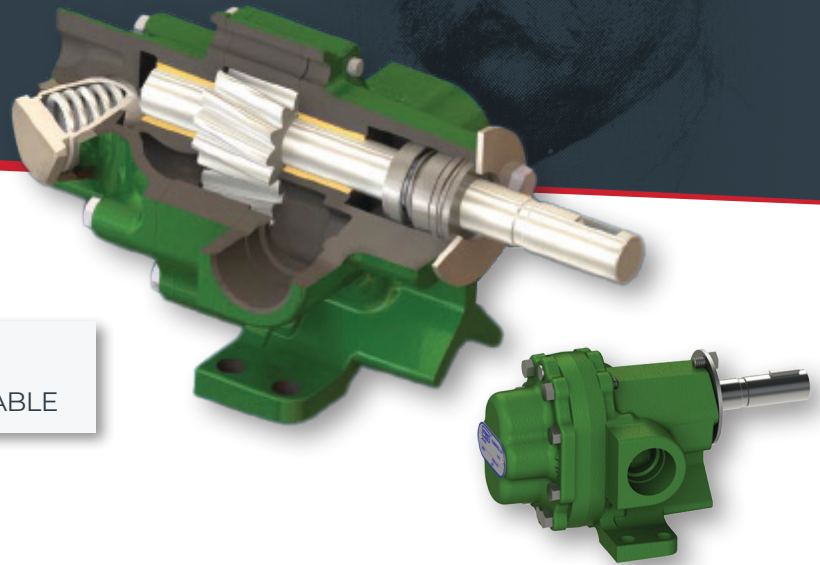
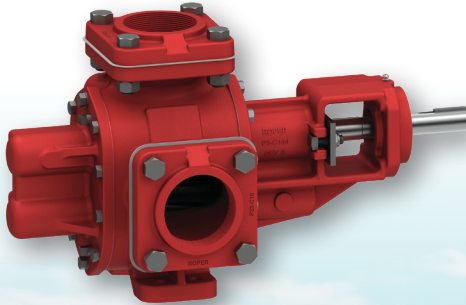
LRG A Series

450°F
(UP TO)

150 PSI
(UP TO)

8
SIZES AVAILABLE

Motor-speed operation and lower pulsation compared to internal gear pumps.



3600 Series

450°F
(UP TO)

125 PSI
(UP TO)

9
SIZES AVAILABLE

HEAT TRANSFER OIL

SML A Series

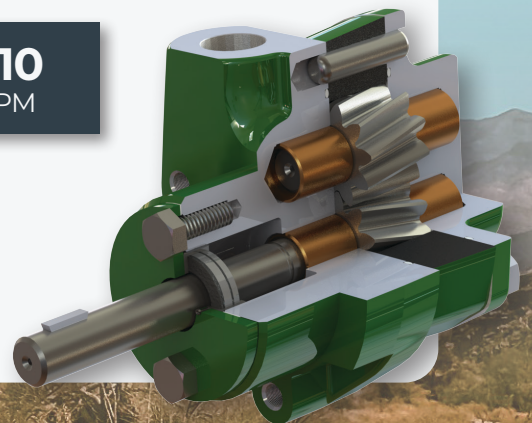
550°F
(UP TO)

300 PSI
(UP TO)

4
SIZES AVAILABLE

1-10
GPM

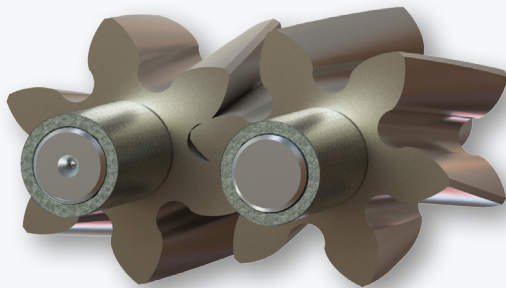
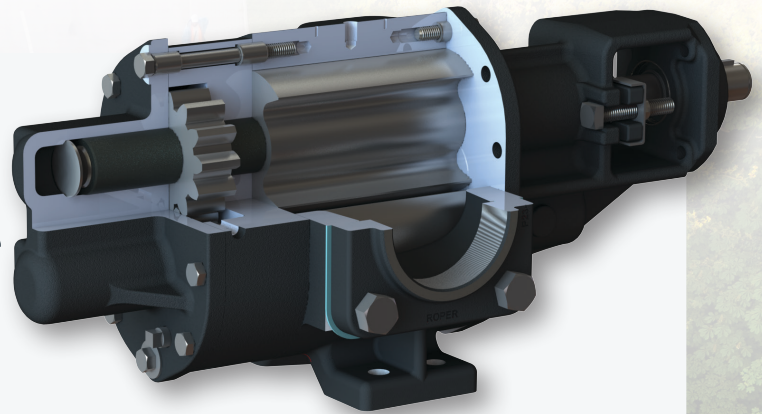
This pump features a custom triple-lip seal for **leak-free** operation by design, handling temperatures up to 550°F. Other options are available for mounting type, relief valve, and sealing.



MASTIC



This pump is the first of its kind in the asphalt industry, designed to handle viscous fluids with rigid solids.

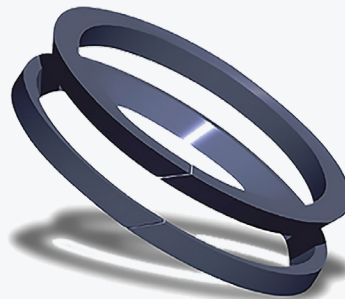


eX Internals

Hardened bearings and shafts stand up to abrasive fillers and sand present in the product.

Wedgee™ Seal

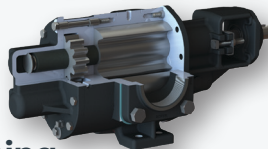
Filters out abrasive solids, extending the life of packing.



ASPHALT EMULSION & SEAL COAT



Large-cavity rotor design ensures a low-shear pumping action. More compact footprint and better drive options compared to air-operated diaphragm pumps.



3600 Series

5600 Series

Rubber gears show resiliency against sand and pea-sized solids



All Roper pumps are designed to meet safety requirements. Always consult the factory before modifications, operate within specified limits, and refer to the Instructions & Owner's Manual (IOM) before use. Rockworx™ pump is patent pending.

(706) 335-5551 • sales@roperpumps.com • www.roperpumps.com