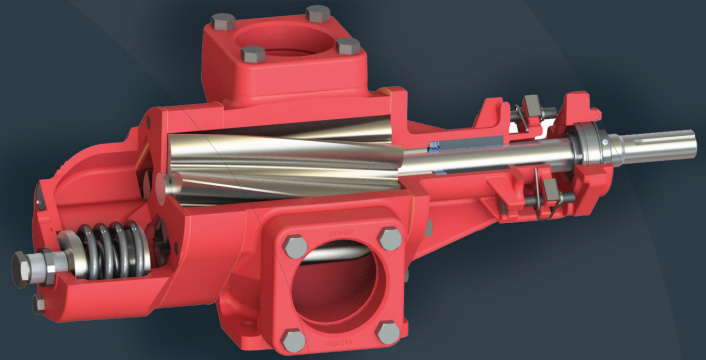




Roper Pump Improves Efficiency As Part of An Optimized Crude Oil Transfer Process With New eX Series Pump



EXECUTIVE SUMMARY

Roper Pump provided an all-new pump, the eX Series (65 size), as part of an optimized solution for increased capacity, streamlined transfer, and faster load and unload times for a customer’s crude oil and condensate application.

MATERIALS OF CONSTRUCTION*

CUSTOMER-SPECIFIC APPLICATION

- HousingsCast Iron
- GearsCast Iron
- ShaftsHardened High-Strength Steel
- Bushings.....Tungsten Carbide (TC)

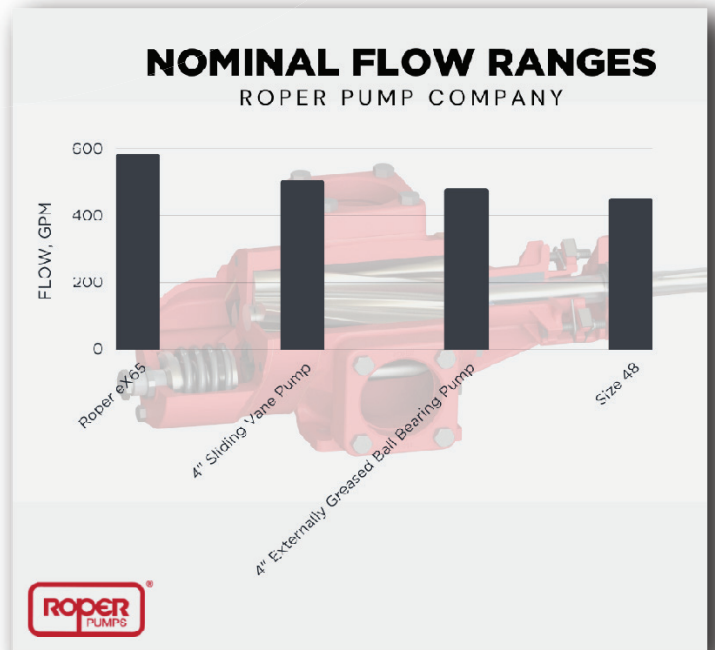
CUSTOMER CHALLENGE

THE APPLICATION

The customer ran a series of tests to compare load and unload times of Roper Pump against a variety of other competing pump brands. Measuring the barrels per minute pumped for a 180 barrel crude trailer, the results would dictate which brand of pump to use as part of their newly optimized crude oil operations.

THE SOLUTION

To enhance the efficiency of their petroleum transfer process, the customer upgraded their piping to 4" and implemented a streamlined workflow for starting and stopping operations. This was done to prevent cavitation and unforeseen pump damage. Roper Pump’s eX Series (65 size) facilitated increased capacity and offered superior sealing, eliminating the need for maintaining an oil lubrication system.

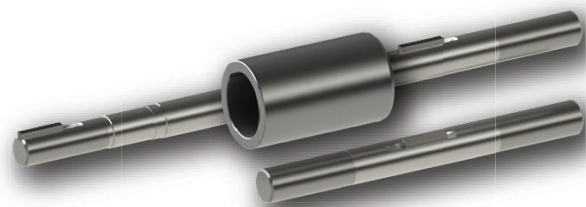




THE LEADING FORCE behind liquids™ since 1857

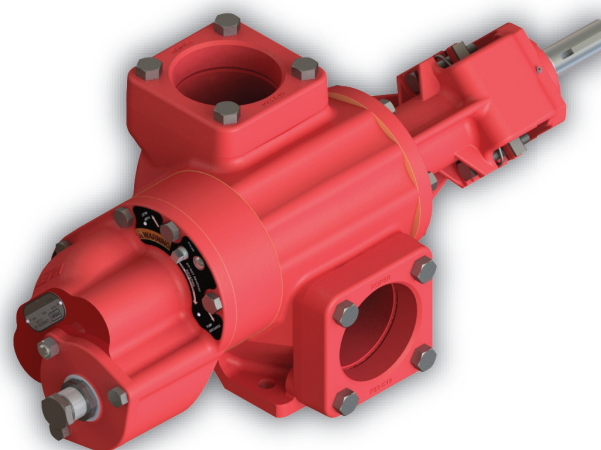
INNOVATION & TECHNOLOGY

Roper Pump's eX Series is specifically designed to meet customer specifications for handling multiviscosity fluids like low viscosity condensate and high viscosity heavy crude oil. These pumps offer higher flow rates for faster loading and unloading, incorporate abrasion-resistant internal components, and feature leak-proof seals. Moreover, the design and materials used in the eX Series pumps make them ideal for petroleum transportation and other high-flow applications like bulk transfer. The eX Series extends the service life of each pump with exceptional wear resistance and reduced maintenance requirements.



RESULTS

After the customer made changes to optimize the system, including installation of the Roper Pump eX Series (65 size), the customer's experience has been remarkably positive. Previously, it took 45 minutes to load a trailer. After initial pump installation, the load time reduced to 22 minutes. Additional runs over the next 8 weeks showed an average load time of 10 minutes per trailer. This increased efficiency means more loads per day, resulting in higher earnings and the retention of employees in a very competitive market due to the effectiveness of the system.



Roper Pump Company

PO Box 269
Commerce, GA 30529 USA

Office: (706) 335-5551
Fax: (706) 335-5490

sales@roperpumps.com
www.roperpumps.com

Copyright © 2023 by Roper Pump Co.

Roper Pumps® is a registered trademark of Roper Pump Company.

THE LEADING FORCE behind liquids™ is a trademark of Roper Pump Company

DISCLAIMER

The information contained within this brochure and the functions offered is intended to provide information about products available for purchase from Roper Pump Company. All reasonable efforts have been made to ensure the accuracy of the information. Under no circumstances shall Roper Pump Company be liable to any party for any damage, whether direct, indirect, special or other consequential damages, for any use of, reference to or reliance on this brochure or its contents - including, but not limited to - any errors or unexpected un-fulfillment of shipments, any loss of profits, or business interruption. Roper Pump Company reserves the right to make changes to the brochure and the product functions at any time without notice.