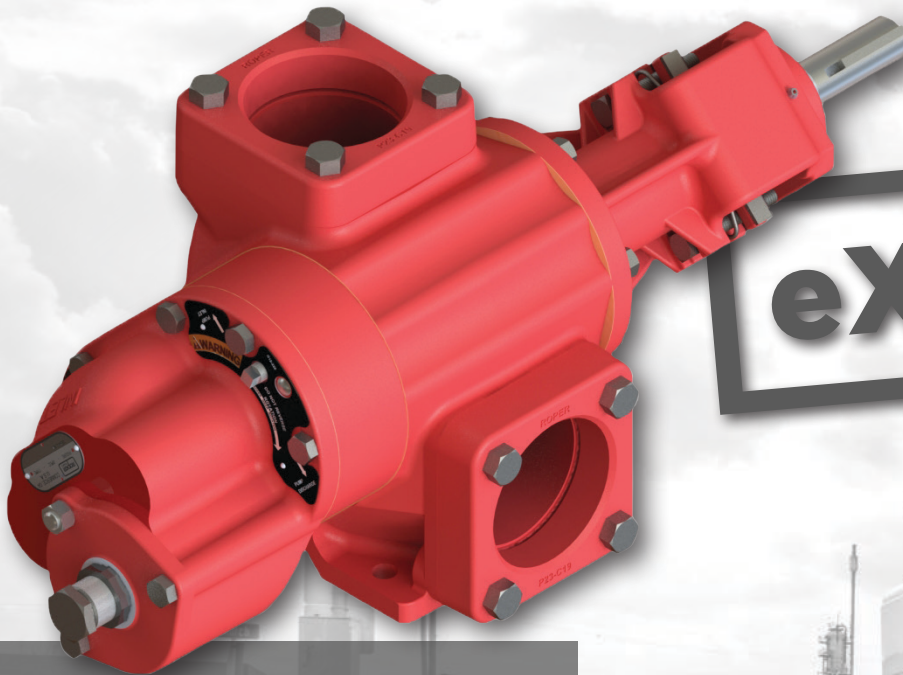


A NEW BREED OF **eXTREME-CONDITION** **CRUDE OIL & CONDENSATE PUMP** HAS **EMERGED**



eX Series

HARDENED INTERNALS
FOR **SUPERIOR**
DURABILITY

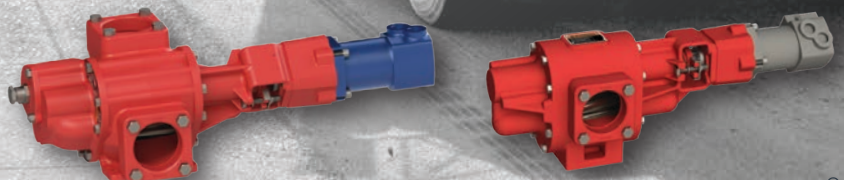
HIGHER **FLOW RATES**

IMPROVED SEALING
OPTIONS TO
ELIMINATE LEAKING

NO EXTERNAL GREASE
SYSTEM REQUIRED

EASY TO MAINTAIN

MULTI-VISCOSITY
CAPABILITIES



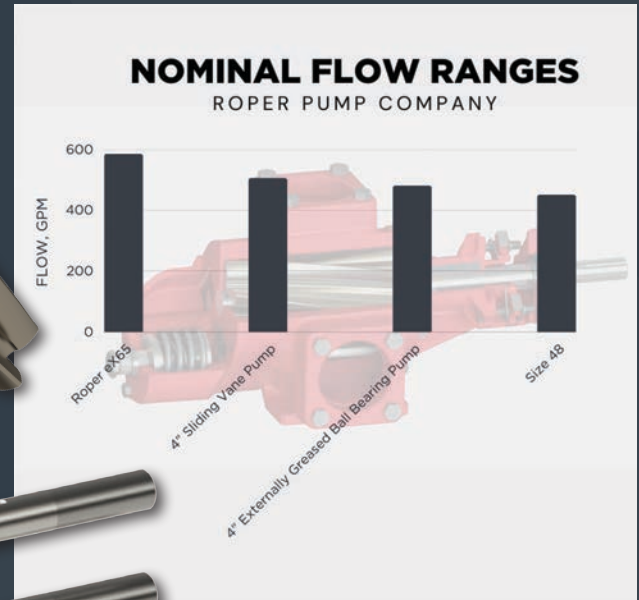
A NEW STANDARD **HAS EMERGED**





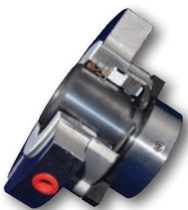
THE ROPER eX Series ADVANTAGE

- ALLOY STEEL SHAFTS THAT ARE SURFACE HARDENED FOR DURABILITY
- WEAR-RESISTANT INTERNALS
- NOTHING TO OIL OR GREASE
- HARDENED IRON GEARS
- CLOSE-COUPLED HYDRAULIC MOTOR MOUNT
- EXTENDED SERVICE LIFE



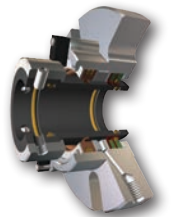
SETTING A NEW STANDARD IN CRUDE OIL AND CONDENSATE PUMPS

SEAL OPTIONS



SUPER SEAL

- Will tolerate extended run dry
- Will resist hydraulic shock
- Versatility for thin to very thick liquids including non-lubricating or gas laden liquids
- No springs to clog and no dynamic O-rings to hang up
- Will tolerate a high degree of pump run-out due to pump wear and/or misalignment

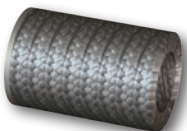


TRIPLE LIP SEAL WITH PACKING BACKUP

- Aids to Control Leakage until Replacement can be Achieved
- Improved Reliability
- Minimizes Maintenance Requirements
- Application Versatility



+



Typical Applications

- Multi-Viscosity Fluids
- Petroleum Condensate
- Crude Oil
- Abrasive Fluids

Models

- 3248BH, 3248BHFRV, 3248HB, 3248HBFRV - Triple Lip Seal w/ BU PKG
- 3748BH, 3748BHFRV, 3748HB, 3748GBFRV - Super Pump Seal
- 3265BH, 3265BHFRV, 3265HB, 3265HBFRV - Triple Lip Seal w/ BU PKG
- 3765BH, 3765BHFRV, 3765HB, 3765GBFRV - Super Pump Seal
- 180 Ports also available for these models, where applicable